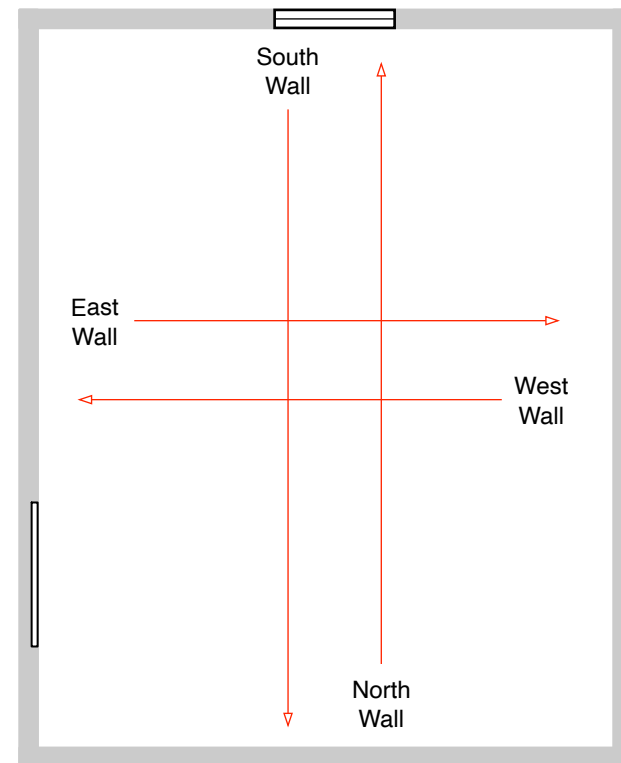


Measurements:

- 1) Length
- 2) Width
- 3) Height
- 4) Door Size & Distance to Closet Corner
- 5) Window Size & Distance to Closet Corner
- 6) Lighting Fixture Measurement(s)
- 7) HVAC Vent Measurement(s)



Photos:

- 1) Walls: Take Photo of each wall from as far back as possible (4 photos total).
- 2) Ceiling: If ceiling is not captured in wall photos, take additional photos to capture full ceiling (1-2 additional photos).
- 3) Additional Notes: Take photos with doors closed and all wall or ceiling mounting fixtures visible (vents, lighting, decorations, switches, outlets, etc). This is to help ensure that we do not recommend treatment to cover these items.